

# MONTHLY MEMBERSHIP PROGRESS REPORT

LOCATION INDIA

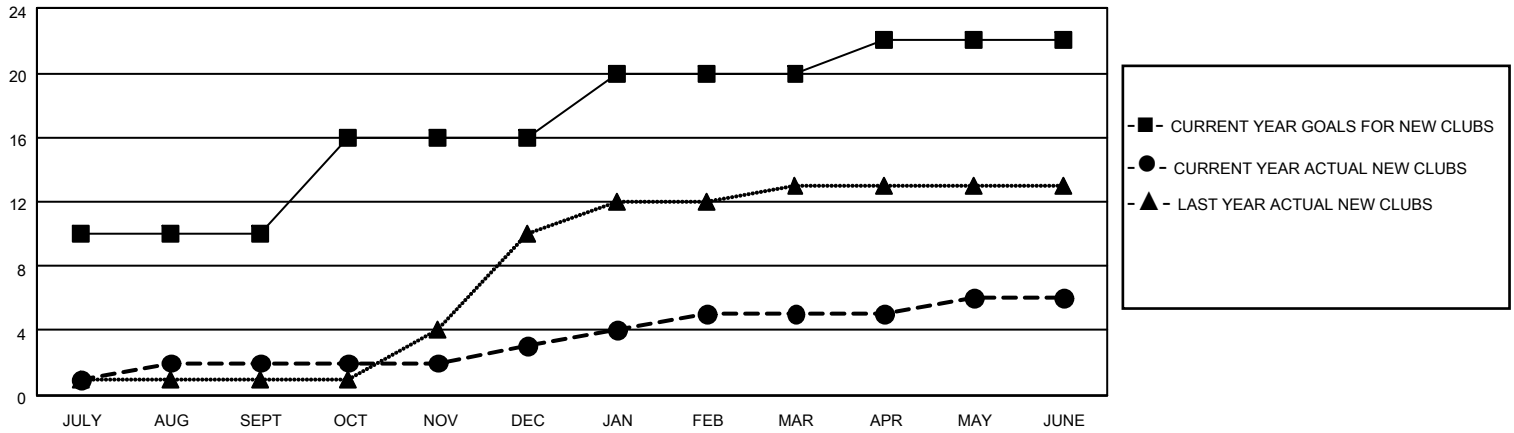
District 318 B

Results as of: 6/30/2022

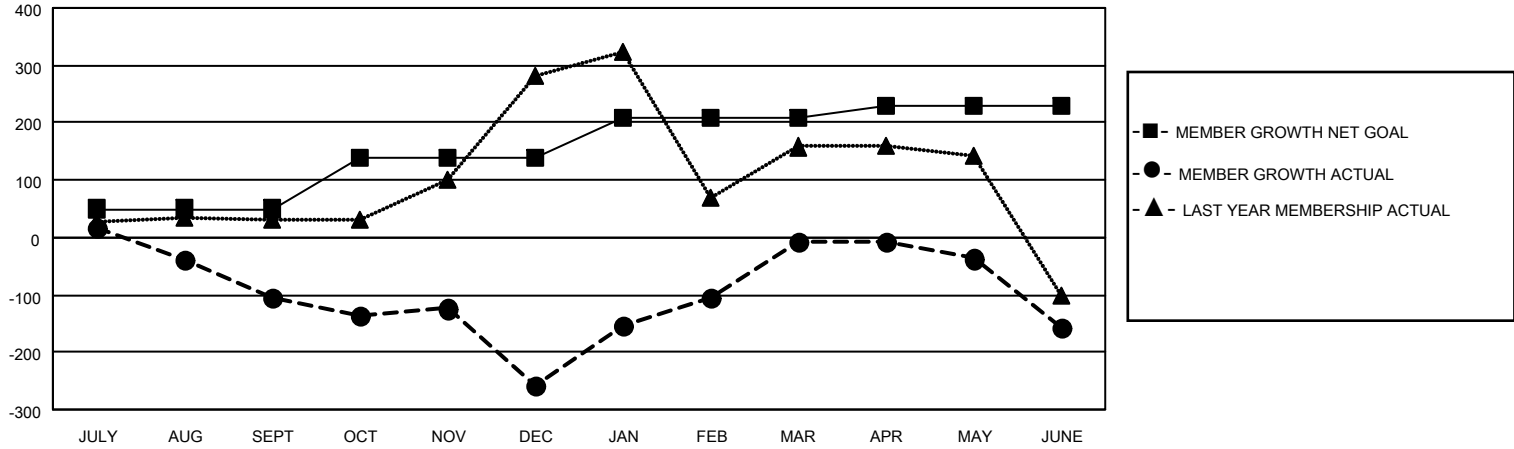
Clubs			
RESULTS FOR 2021-2022			
QUARTER	NEW CLUB GOAL	NEW CLUBS	DROPPED CLUBS
JULY/AUG/SEPT	10	2	10
OCT/NOV/DEC	6	1	7
JAN/FEB/MAR	4	2	2
APR/MAY/JUNE	2	1	1

Members			
RESULTS FOR 2021-2022			
QUARTER	MEMBER GROWTH NET GOAL	MEMBER GROWTH ACTUAL	DROPPED MEMBERS ACTUAL (including transfers)
JULY/AUG/SEPT	50	114	213
OCT/NOV/DEC	90	130	265
JAN/FEB/MAR	70	464	122
APR/MAY/JUNE	20	166	279

**GOALS AND ACTUAL NEW CLUBS CUMULATIVE**



**GOALS AND ACTUAL MEMBERS CUMULATIVE**



**DROPPED CLUBS: 20**

**74 CLUBS OF 131 ADDED 1 OR MORE NEW MEMBERS**

**GENDER DISTRIBUTION**

MALE	3,056 (84.37%)
FEMALE	566 (15.63%)
NON BINARY	0 (0.00%)
PREFER NOT TO ANSWER	0 (0.00%)

**DROPPED MEMBERS**

[CLICK HERE FOR CUMULATIVE MEMBERSHIP DATA](#)

DECEASED	19
CLUB CANCELLED	386
OTHER	474
<b>TOTAL</b>	<b>879</b>

TOTAL FAMILY UNIT MEMBERS 967

FAMILY MEMBERS PAYING HALF DUES 508